



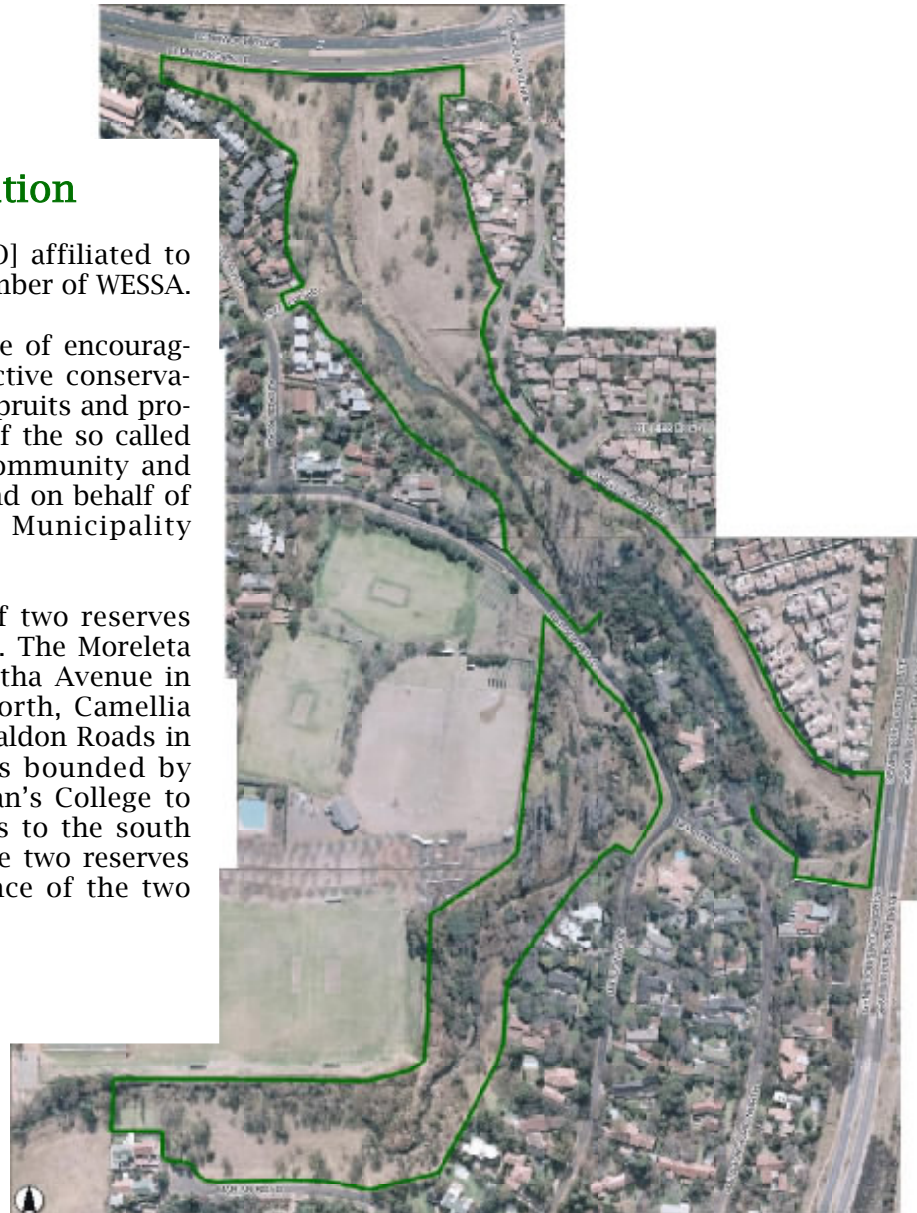
ecoglen

The Ecoglen Association

is a Public Benefit Organisation [PBO] affiliated to the Friends of The Moreleta and a member of WESSA.

Founded in July 2004 for the purpose of encouraging public participation in the pro-active conservation of the Moreleta and Waterkloof Spruits and promoting sustainable recreational use of the so called Ecoglen Conservancy by the local community and general public, in conjunction with and on behalf of the City of Tshwane Metropolitan Municipality [CTMM].

The Ecoglen Conservancy consists of two reserves within the suburb of Lynnwood Glen. The Moreleta reserve is bounded by Gnl. Louis Botha Avenue in the south, Lynnwood Road in the north, Camellia Avenue in the east and Alcade and Maldon Roads in the west. The Waterkloof reserve is bounded by Glenwood Road to the west, St. Alban's College to the north, Marion and Maldon Roads to the south and east. Maldon Road intersects the two reserves on the western side of the confluence of the two spruits.





ecoglen

The mission of the Ecoglen Association [Ecoglen] and its objectives are fully documented in the organisation's constitution [Copy available on request].

For the purposes of this management plan Ecoglen's purpose, in partnership with the CTMM, is to administer and actively promote recreational use of the Ecoglen Conservancy, in a manner aligned with acceptable ecological conservation principles, amongst its members, the local community and the general public.

To do this, Ecoglen, in partnership with the CTMM, needs to operate in four broad areas of endeavor;

1. Create a secure, safe and accessible environment.
2. Rehabilitate, conserve and sustain the flora and fauna.
3. Provide and sustain infrastructure to encourage involvement with, and use of, the Conservancy.
4. To administer and operate the Conservancy.

This plan covers the period 2007 to 2009 and indicates planned activities for each of the four areas of endeavor. Ecoglen raises funding through membership fees and donations, all activities are dependent on sufficient funds being available so timing is indicative only.

Create a secure, safe and accessible environment.

Secure and Safe environment:

Maintaining controlled access to the conservancy is becoming problematic for various reasons, for example, damage to the gates and fencing, access through the bridge culverts as well as the need to provide access through the Lynnwood Road gate and the process to manage this.

So, although the priority for funding has shifted from security to accessibility, safety and security within the reserve will remain a concern during the period of the plan. Activities in this regard are envisaged to be procedural and will address such issues as speedy identification and repair of damage to the fence and gates. As well as the possible introduction of a 'risk' warning to members so that they are aware of possible problems within the conservancy and can take appropriate precautions.

Flood damage has been listed as one of the issues affecting personal safety within the conservancy. As in the prior period this issue hasn't been specifically addressed in Ecoglen's activities although staying on the paved walkways, once complete, will ensure a degree of safety.

Flood damage in the conservancy has been exacerbated by the heavy flooding at the end of 2006.

Pictured is a standing pool of flood water where the infill of a trench, dug to lay cable for electrical services to the Glenwood Village 2 development, has been washed away. Subsequent flooding continues to enlarge the trench and wash away soil and vegetation.



View of the river bank in the Moreleta reserve after flooding has scoured the bank and removed vegetation becoming a hazard to unwary visitors to the reserve.





ecoglen

Extensive scouring of the riverbank has increased the extent of erosion damage within the conservancy especially in areas previously damaged. Again from a funding perspective this is not yet viewed as a priority but it may at least become necessary to place warning signs in appropriate locations.

Accessible environment:

With the completion of the boundary fencing the emphasis for funding has shifted from security to accessibility, and this aspect is expected to remain a priority during the period of the plan.

Work has started on the construction of a concrete footpath, located in the Moreleta Reserve, to provide wheelchair friendly and improved, wet weather access. Unfortunately lack of funding has prevented the completion of this footpath and this will remain a priority for funding until its completion.

It is not the intention to provide concrete pathways throughout the conservancy but in order to make the conservancy more accessible, alternative means of providing trails throughout the conservancy will be investigated and implemented where appropriate.

It has not been possible to achieve the level of funding required to deliver on our last 3 year plan, and so this plan has been tempered accordingly.

Rehabilitate, conserve and sustain the flora and fauna.

Work has started toward the creation of a base-line study of the flora and fauna of the conservancy with the identification of 10 species of indigenous tree and shrub. More focus is needed in this area and work on a base-line will be prioritised in the first year of this planning period. This activity will be key to ongoing strategy development in this field of endeavor.

Reintroduction of flora and fauna to the conservancy remains a key component of Ecoglen's planned activities. However, until the current issues with controlled access are resolved it is likely that reintroduction and rehabilitation will be confined to vegetation.

Ecoglen's plan for an Otter program have been rescheduled for later than anticipated, primarily due to funding. The Otter program is viewed to be dependent on the rehabilitation of the small dam [situated downstream of Gnl. Louis Botha Ave.]. Based on current experience, the rate of funding will not support activity in this regard until Q3 2009. Having said that the condition of the dam wall is deteriorating and it may become necessary to reallocate funding in this regard.

As a general policy, feasibility studies will be undertaken before any rehabilitation program is undertaken. The output of such studies will contribute to an overall ecological assessment of the Conservancy.

Tree tagging as part of a base-line study of the flora and fauna of Ecoglen.

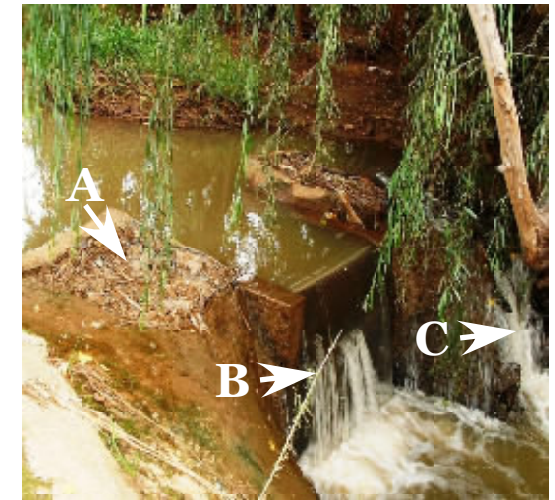


Pictured at right is a photo of the dam wall indicating some of the problems needing to be addressed:

A: The concrete capping has been washed off the wall and the embankment is being eroded.

B: The outflow is leaking lowering the dam capacity during dry periods.

C: Erosion has created additional outflow which increases the speed at which the dam empties.





ecoglen

Provide and sustain infrastructure to encourage involvement with and use of the conservancy.

Work has started in this aspect with the provision of 'reflection points' at selected locations along the pathways. Further reflection points will be provided as the pathways progress and funding permits.

Also planned is the provision of bird hides as well as educational sign-boarding at appropriate locations within the Conservancy.

Small parking areas were planned at a number of the Conservancy access gates, however given the lack of and prioritisation of funding the first parking area is only likely to be constructed late 2009.

Administer and operate the conservancy.

Ecoglen functions to assist the CTMM by raising additional appropriate funding, and to administer such funds effectively and ethically.

In this regard Ecoglen's 2005 and 2007 financial accounts were professionally audited and found to "fairly present, in all material respects, the association's financial position in accordance with generally accepted accounting practice."

In this regard a marketing portfolio was added to the executive committee to provide focus on fundraising and promotion of the association's aims and objectives. At the current time this position is vacant and this has contributed to the funding issues experienced.

Operational overview 2006.

As stated, Ecoglen's operations are totally dependent on the availability of funds and so a rather ambitious development plan for 2006 was tempered by a disappointing lack of funds.

Despite that, 2006 was a successful year for Ecoglen with a number of planned projects being brought to a successful conclusion across all four areas of endeavor.

With regards to creating a secure, safe and accessible environment, the concrete pathway, although not complete, was extended considerably. In addition the old ford, south of the Alcade Road gate, was upgraded to provide much improved east-west access across the Moreleta, benefitting both the Lynnwood Glen and Glenwood Village communities through much improved wet weather access to the conservancy.

With regards to rehabilitation and conservation, CTMM removed invasive plant growth within the conservancy and replanted indigenous shrubs in various areas.

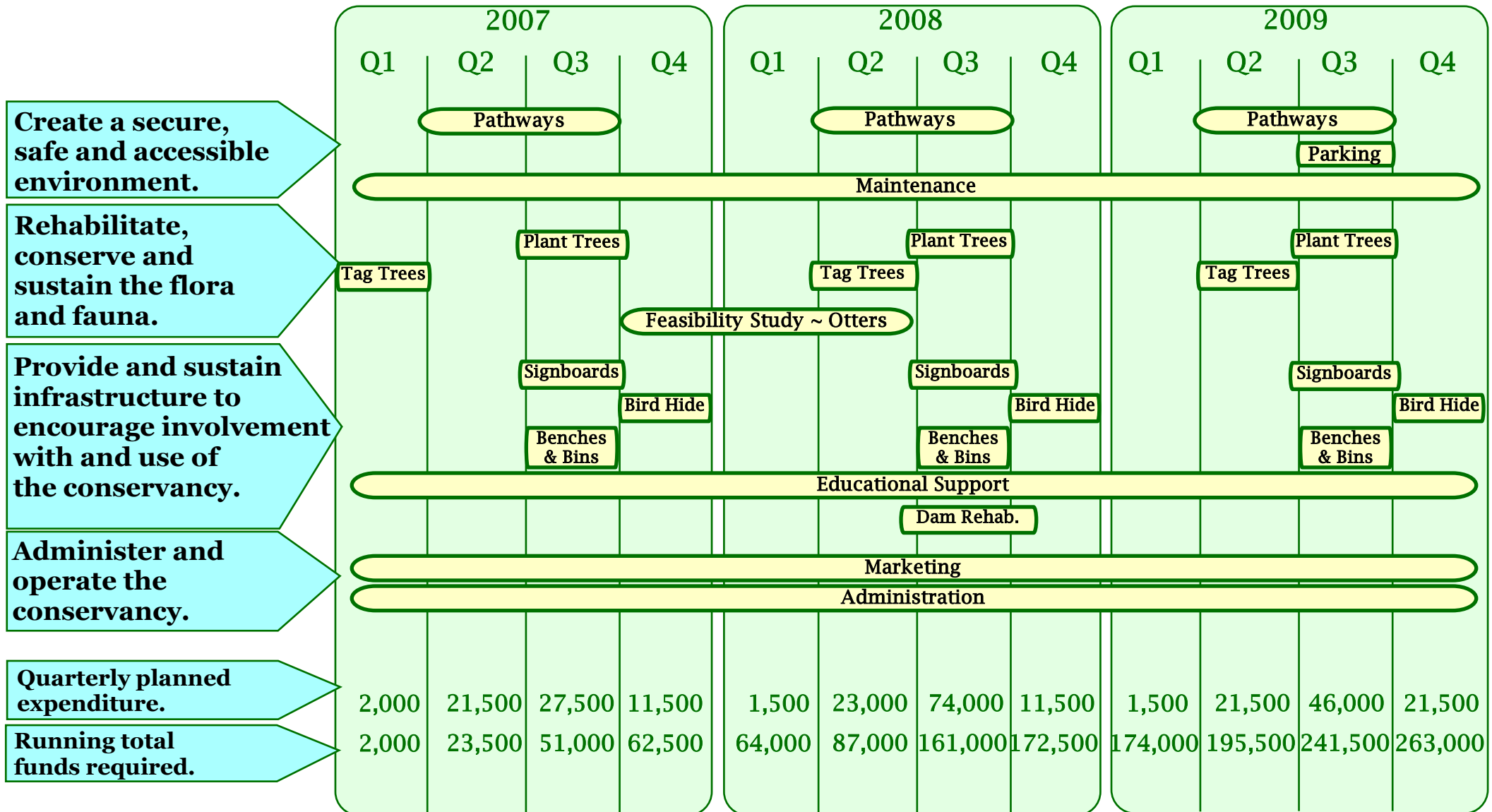
With regards to providing infrastructure to encourage involvement with and use of the conservancy, reflection points were introduced in the Moreleta reserve, waste bins were provided at each access gate and monthly walkabouts in the conservancy were introduced.

With regards to administering and operating the conservancy, Ecoglen finished the financial year with a small operating loss for the year but still retained a small cash surplus. Ecoglen also implemented a website which will be developed during the course of 2007 to provide an interaction portal for its members as well as informational and educational resources.

The diagram overleaf represents a condensed view of Ecoglen's planned activities for the next 3 years as well as an indication of timing and an estimation of funding required to complete the proposed work. On the following page are charts summarising Ecoglen's financial activities in past and future periods.



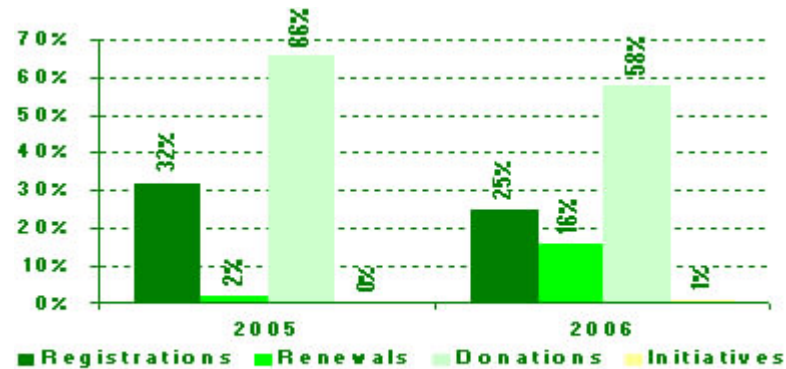
ecoglen



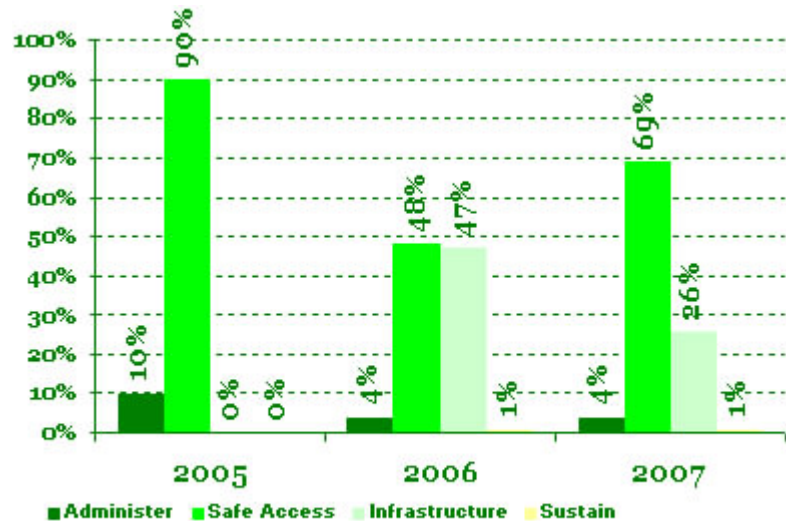


ecoglen

The chart below categorises contribution to Ecoglen's income for the last two financial periods.



The chart below categorises Ecoglen's expenditure across its four areas of endeavor for the past two financial periods and a projection for the current financial period.



CONTACT DETAILS

ADDRESS: c/o 58 MALDON ROAD
LYNNWOOD GLEN
PRETORIA 0081

PHONE: 083 284 1844

EMAIL: ecoglen@global.co.za



www.ecoglen.za.org