



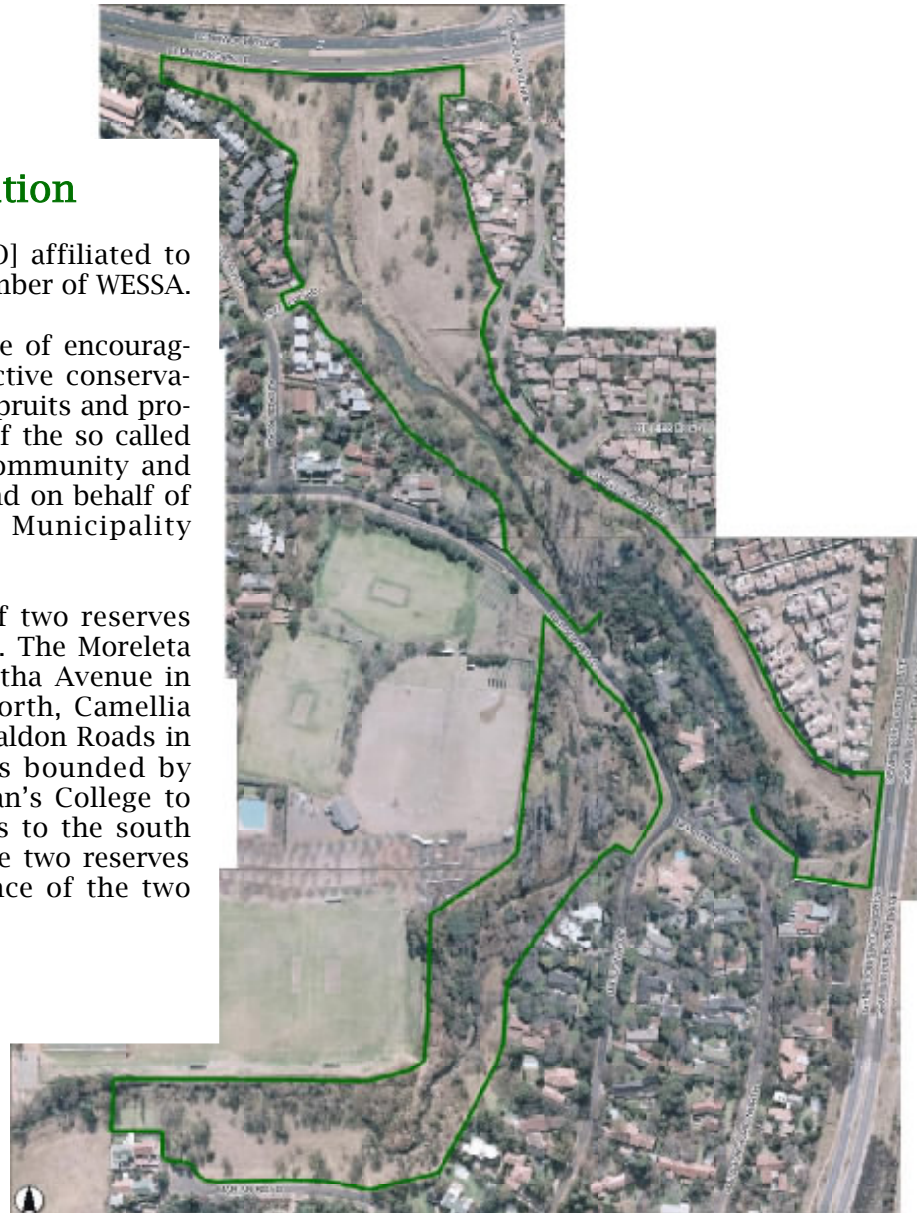
ecoglen

The Ecoglen Association

is a Public Benefit Organisation [PBO] affiliated to the Friends of The Moreleta and a member of WESSA.

Founded in July 2004 for the purpose of encouraging public participation in the pro-active conservation of the Moreleta and Waterkloof Spruits and promoting sustainable recreational use of the so called Ecoglen Conservancy by the local community and general public, in conjunction with and on behalf of the City of Tshwane Metropolitan Municipality [CTMM].

The Ecoglen Conservancy consists of two reserves within the suburb of Lynnwood Glen. The Moreleta reserve is bounded by Gnl. Louis Botha Avenue in the south, Lynnwood Road in the north, Camellia Avenue in the east and Alcade and Maldon Roads in the west. The Waterkloof reserve is bounded by Glenwood Road to the west, St. Alban's College to the north, Marion and Maldon Roads to the south and east. Maldon Road intersects the two reserves on the western side of the confluence of the two spruits.





ecoglen

The mission of the Ecoglen Association [Ecoglen] and its objectives are fully documented in the organisation's constitution [Copy available on request].

For the purposes of this management plan Ecoglen's purpose, in partnership with the CTMM, is to administer and actively promote recreational use of the Ecoglen Conservancy, in a manner aligned with acceptable ecological conservation principles, amongst its members, the local community and the general public.

To do this, Ecoglen, in partnership with the CTMM, needs to operate in four broad areas of endeavor;

1. Create a secure, safe and accessible environment.
2. Rehabilitate, conserve and sustain the flora and fauna.
3. Provide and sustain infrastructure to encourage involvement with, and use of, the Conservancy.
4. To administer and operate the Conservancy.

This plan covers the period 2006 to 2008 and indicates planned activities for each of the four areas of endeavor. Ecoglen raises funding through membership fees and donations, all activities are dependent on sufficient funds being available so timing is indicative only.

Create a secure, safe and accessible environment.

Secure environment:

Security was the priority for Ecoglen's inaugural year and the majority of funds were directed toward fencing the reserves. The boundaries of both the Moreleta and Waterkloof reserves were fenced, thanks in part to the relocation St Alban's College's boundary fence to secure the Waterkloof reserve. Pedestrian through traffic and vagrancy have reduced through the introduction of controlled, but free, access which has reduced the ecological problems this caused [see picture at right]. Uncontrolled access is still possible through bridge culverts at Gnl. Louis Botha Ave and Lynnwood, Glenwood and Maldon Roads, securing of these ingress points may be required in future.

Safe environment:

The reduced pedestrian through traffic and vagrancy have increased perceptions of safety in the conservancy as evidenced by increased recreational usage. However safety goes beyond the threat of criminal activity and other aspects need to be addressed. Flood water erosion has left a number of deep potholes which become standing pools after heavy rain and pose both a health and personal safety risk especially to children and the infirm using the area.

Pictured is the site of a vagrant's camp alongside the fence on the boundary of St Alban's College just before the Waterkloof Reserve was fenced. Clearly visible is the large volume of litter as well as the denuded brush.



Pictured is a standing pool of flood water where the in-fill of a trench, dug to lay cable for electrical services to the Glenwood Village 2 development, has been washed away.





ecoglen

Accessible environment:

Work has commenced on the laying of a concrete footpath. The initial pathway is being constructed in the Moreleta reserve with the first section beginning at the Lynnwood Road gate, that being the main public access. A second section has been started at the Maldon Road gate, the plan being for the two sections to meet up. The pathway project is one that will be completed in stages as and when funds become available.

The pathway meets a number of objectives primarily though it is designed to facilitate wet weather access and extend the availability of the Conservancy for recreational use. At the same time the pathway has also been constructed to enable wheelchairs access and although it is not the intention to provide concrete pathways throughout the conservancy efforts will be made to provide sufficient and suitable access to ensure a visit to the area is a rewarding experience for the less abled.

The conservancy being part of the floodplain of the both the Moreleta and Waterkloof Spruets is often unuseable after heavy rains and in the Moreleta reserve in particular, the ford south of the Alcade Road gate which allows east-west access is impassible. The upgrading of this ford to provide better clearance and extend wet weather usage even further is planned for the near future.

Rehabilitate, conserve and sustain the flora and fauna:

To address any aspect of these factors it is essential to ascertain the current status of the fauna and flora as a base-line. There still appears to be an abundance of bird life within the conservancy, St Alban's Nature Club report confirmed sightings of some 66 species of bird between November 2005 and March 2006. However, the occurrence of mammalian, reptilian, amphibian and aquatic species has been in decline for some time.

Knowing what is here and what is missing will be key to strategy development in this field of endeavor. Reintroduction of flora and fauna to the conservancy will be a key component of Ecoglen's activities in this regard. Ecoglen has a small dam [situated downstream of Gnl. Louis Botha Ave.] which creates a fairly large body of water. Because of this one of the possibilities being considered is an Otter program, otters used to inhabit the Moreleta Spruit and have occasionally be seen in the dam area. The dam wall however is in need of repair and this would be a prerequisite for such a program to be contemplated. Another prerequisite for such a program would be a feasibility study to ensure a reasonable chance of success. The rehabilitation of the dam wall as well as a feasibility study for an otter program have been identified as priority.

Pictured is a stretch of the pathway constructed north of the Maldon Road gate to provide wet weather and wheelchair access to the Moreleta Reserve.



Pictured is the ford south of the Alcade Road gate showing the river overtopping the stepping stones after heavy rain and hampering east-west access in the Moreleta Reserve.





ecoglen

Feasibility studies will be undertaken before any rehabilitation program is undertaken. The output of such studies will contribute to an overall ecological assessment of the Conservancy.

As part of this assessment, a study will be undertaken early in 2006 to identify and tag specific tree species within the Conservancy. This program will be beneficial from both an informational and educational aspect.

Another component of the assessment will be the identification of the local drivers of the apparent sustainability of the bird life. This needs to be understood before an appropriate policy for dealing with invasive plant species can be developed. A policy of suitable replacement at time of removal is likely for mature specimens whilst new growth will be removed regularly to ensure no dependencies are engendered.

Provide and sustain infrastructure to encourage involvement with and use of the conservancy.

Work has been started in this aspect as well with the provision of 'reflection points' [see picture at right] at selected locations along the pathways currently constructed. Further reflection points will be provided as the pathways progress and funding permits. Also planned is the provision of bird hides and

educational sign-boarding at appropriate locations within the Conservancy. Small parking areas are also planned at a number of the Conservancy access gates.

Administer and operate the conservancy.

This field of endeavor requires that Ecoglen assist the CTMM by raising additional appropriate funding, and administer such funds effectively and ethically. In this regard Ecoglen's accounts were professionally audited in 2005 and found to "fairly present, in all material respects, the association's financial position in accordance with generally accepted accounting practice."

The association must actively promote recreational use of the area and prioritise projects so that the aims of the CTMM and the Association can be met. In this regard a marketing portfolio has been added to the executive committee focused on fundraising and promotion of the association's aims and objectives. An interactive web site will be created to promote Ecoglen's activities and projects as well as providing an informational and educational resource.

The diagram overleaf represents a condensed view of Ecoglen's planned activities as well as an indication of timing and an estimation of funding required to complete the proposed work.

Pictured is the friendly face of a Cape Clawless Otter, unfortunately not taken in the Conservancy this time. If the feasibility study is positive they may become a common site for visitors to Ecoglen.



Pictured is a visitor to the Moreleta Reserve making use of one of the newly constructed "Reflection Points"





ecoglen

Create a secure, safe and accessible environment.

Rehabilitate, conserve and sustain the flora and fauna.

Provide and sustain infrastructure to encourage involvement with and use of the conservancy.

Administer and operate the conservancy.

Quarterly planned expenditure.

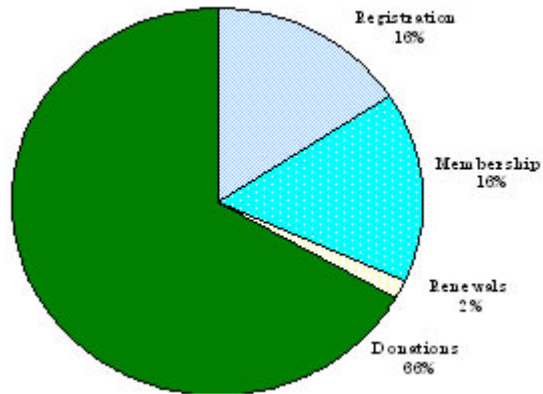
Running total funds required.

	2006				2007				2008			
	Q1	Q2	Q3	Q4	Q1	Q2	Q3	Q4	Q1	Q2	Q3	Q4
	Pathways											
			Parking				Parking				Parking	
	Maintenance											
		Plant Trees				Plant Trees				Plant Trees		
		Tag Trees				Tag Trees				Tag Trees		
		Remove Aliens		Remove Aliens		Remove Aliens		Remove Aliens		Remove Aliens		Remove Aliens
	Cut Grass		Cut Grass		Cut Grass		Cut Grass		Cut Grass		Cut Grass	
		Feasibility Study ~ Otters										
		Signboards			Signboards		Signboards		Signboards		Signboards	
			Bird Hide				Bird Hide				Bird Hide	
	Benches & Bins		Alcade ford upgrade	Benches & Bins			Benches & Bins				Benches & Bins	
	Educational Support											
							Dam Rehab.					
	Marketing											
	Administration											
Quarterly planned expenditure.	20,000	24,500	25,500	85,500	21,000	24,500	97,000	44,000	21,000	24,500	47,000	44,000
Running total funds required.	20,000	44,500	70,000	155,500	176,500	201,000	298,000	342,000	363,000	387,500	434,500	478,500

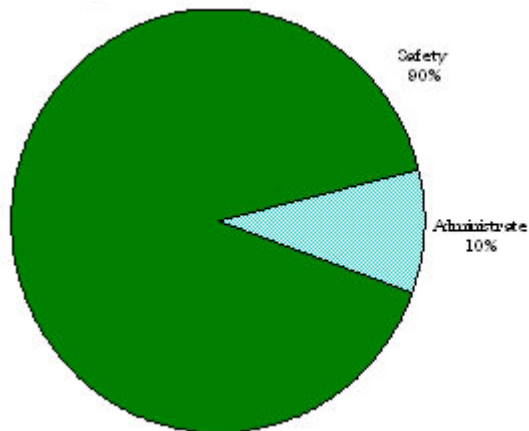


ecoglen

The chart below indicates current contribution to Ecoglen's income. The largest contribution being donated funds, accounting for 66% of total income.



The chart below indicates Ecoglen's expenditure to date. The largest area of expenditure being directed toward the creation of a secure, safe and accessible environment, accounting for 90% of total expenditure.



CONTACT DETAILS

ADDRESS: c/o 58 MALDON ROAD
LYNNWOOD GLEN
PRETORIA 0081

PHONE: 083 284 1844

EMAIL: ecoglen@global.co.za



www.ecoglen.za.org